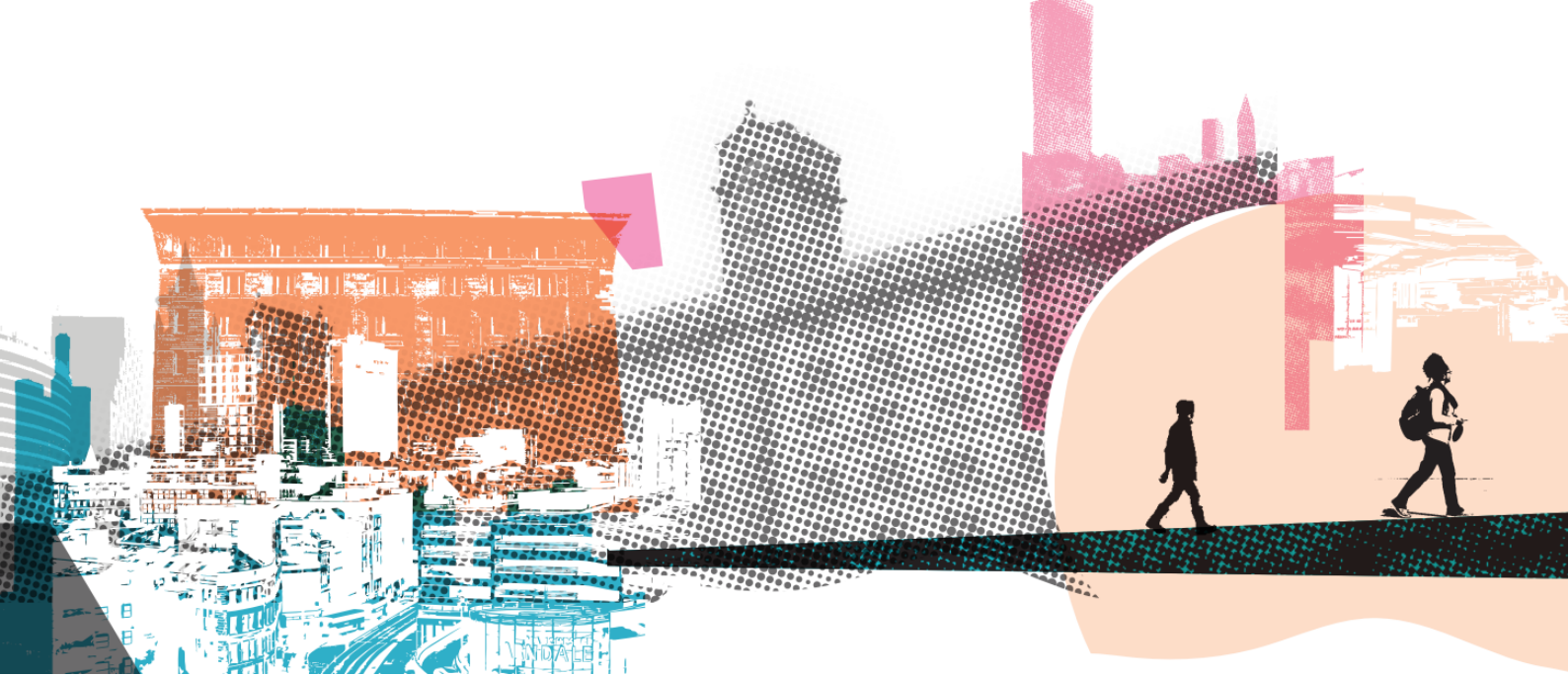


# THE BIG LiFE GROUP



**SEND Teacher**  
**(Unity Community Primary School)**



## About The Big Life Group

The Big Life Group's mission is to fight for equity, in health, in wealth and in life. We are a social business delivering a range of services across the North of England, covering everything from mental and physical health, addiction and criminal justice, to housing, education, family support and much more. What links them together is the way we work – The Big Life Way.

We always stand shoulder-to-shoulder with people, working with them on the things that matter most to them. Everything we do is designed and informed by the needs, priorities and strengths of people and communities.

## Our values

- **Courage:** We stand up for ourselves, and the people and communities we work alongside, even when that makes us unpopular, or challenges accepted wisdom.
- **Creativity:** We find innovative solutions that work, never accepting the easy option or the status quo.
- **Honesty:** We act with integrity, speaking the truth to ourselves and others.
- **Inspiration:** We are inspired by the people and communities we work with and share what we learn from them to inspire others.
- **Thoughtful:** We act with care and compassion and work to understand people's experiences. We take time to listen, reflect and continually learn.
- **Valuing difference:** We recognise and celebrate the unique qualities, gifts, insights and perspectives that different people offer.

# Working at Big Life

At Big Life, work is more than a job – it's about standing shoulder-to-shoulder with people and communities, making a difference every day. We fight for equity in health, in wealth and in life, and that commitment starts with how our staff.

## Be yourself

---

We want you to feel safe, respected and able to bring your whole self to work. Difference is celebrated here, and our staff networks - from menopause to neurodiversity, LGBTQI+ and more - create space to connect and support each other.

## Benefits that matter

---

We offer more than a payslip - you'll find wellbeing support through LifeWorks, Simply Health and mindfulness sessions, 25-30 days' annual leave plus your birthday off, flexible working, and regular learning opportunities. Everyday perks include Blue Light Card discounts, savings schemes, cycle-to-work, free eye tests and more - little extras to make life easier inside and outside of work.

## Recognised as outstanding

---

We're proud to be ranked by Best Companies as one of the UK's outstanding places to work, with a two-star accreditation in 2024.

## A culture of trust and flexibility

---

Our people describe our culture as relaxed and supportive. You'll be trusted to plan your own day, take breaks when you need, and work in a way that fits with your life as well as your role.

**If you're looking for more than a job - if you want to be part of a team that's bold, creative and relentlessly committed to equity – then Big Life could be the place for you.**



# Job Description: SEND Teacher

## The basics

---

### Salary

Teachers' pay scale M1 – U1: £31,650 - £45,646 plus SEND allowance (£2,787)

### Hours

Full-time school hours, term-time only (39 weeks per year)

### Annual leave

Term-time only

### Base

Unity Community Primary School

### Line manager

SENDCo

**Closing date for applications:** Monday, 27 April (midday)

**Interviews:** Wednesday, 6 May

## What you'll be doing

---

As our SEND Teacher, you will deliver high-quality, inclusive teaching within our Hive provision, supporting pupils with additional needs to make meaningful progress towards their EHCP and IEP outcomes.

You will create a safe, nurturing and engaging learning environment, adapting teaching approaches to meet individual needs and supporting pupils to build independence, communication skills and confidence. You'll work closely with teaching assistants, the SENDCo, families and external agencies to ensure a joined-up, child-centred approach.

This role offers a unique opportunity to work in a specialist provision within a mainstream school, helping shape inclusive practice and making a real difference to children's lives.

## **Main duties**

---

1. Plan and deliver high-quality lessons tailored to meet the needs of pupils with SEND.
2. Assess, monitor and track pupil progress, identifying next steps and adapting teaching accordingly.
3. Support pupils to make small, meaningful steps of progress towards EHCP and IEP outcomes.
4. Create a safe, nurturing and inclusive learning environment.
5. Work collaboratively with teaching assistants and support staff, effectively deploying and guiding their work.
6. Liaise with the SENDCo, parents, carers and external professionals to support pupil progress.
7. Maintain accurate records and contribute to reporting and assessment processes.
8. Contribute to curriculum development and whole-school improvement.
9. Support behaviour management and promote positive relationships across the school.
10. Participate in staff meetings, training and professional development activities.
11. Lead or contribute to curriculum areas and school initiatives as required.
12. Support wider school life, including events and activities.

## **Work-related expectations**

---

1. Work within Big Life Group's mission, values and ethos.
2. Contribute to the development of Big Life Schools Trust and Unity Community Primary School.
3. Work in accordance with all Big Life Group policies, particularly safeguarding, health and safety and information governance.
4. Commit to personal development and ongoing professional learning.
5. Work in line with all relevant legislation and professional standards.
6. Participate in supervision, appraisal and performance management processes.
7. Undertake any other duties appropriate to the role.

## **About Unity Community Primary School**

---

Unity Community Primary is a two-form entry primary school serving a richly diverse community in Cheetham, North Manchester. Unity is part of the multi-academy trust Big Life Schools, which shares the vision and values of the Big Life group.

We have nearly 400 pupils aged 2-11, coming from many different countries and speaking 38 different languages. Our pupils are happy children who love school, and we want to encourage them to have the best possible start in life. We work hard to be a truly inclusive community. Diversity, respect and tolerance are at the core of our school identity, and we are proud to have the Rights Respecting Gold Award and the Belonging Matters Charter Mark.

As a school we use trauma-informed approaches to support our children's emotional health and wellbeing. We also put a great emphasis on developing positive relationships between every member of our school community.

Candidates are highly encouraged to visit the school and discuss the position with Head of Early Years. Please ring the school office on 0161 871 2614 or visit [www.unitycommunityprimary.com](http://www.unitycommunityprimary.com) for more information about our school.

**The post is subject to an Enhanced DBS with a check of adults barred list and is exempt from the Rehabilitation of Offenders Act 1974**

# Person Specification: SEND Teacher

The successful candidate will be able to demonstrate that they meet the following points, either in their application, at an interview or through taking part in a test.

## Experience

---

1. Qualified teacher status.
2. Recent experience teaching across the primary age range in the UK, including pupils with SEND.
3. Experience delivering interventions and support for pupils with EHCPs and IEPs.
4. Evidence of ongoing professional development.

## Skills

---

1. Excellent classroom practitioner with strong inclusive teaching skills.
2. Ability to adapt teaching to meet a wide range of needs.
3. Strong communication skills, able to engage effectively with pupils, staff and families.
4. Ability to lead, support and motivate staff and pupils.
5. Effective time management and organisational skills.
6. Ability to build strong relationships with parents, carers and external agencies.
7. Ability to evaluate teaching and learning and drive improvement.

## Knowledge

---

1. Strong knowledge of SEND pedagogy and inclusive practice.
2. Understanding of barriers to learning and how to support children and families to overcome them.
3. Knowledge of assessment, tracking and progress measures for SEND pupils.
4. Understanding of safeguarding requirements and procedures.

## Personal

---

1. Positive, patient and enthusiastic approach.
2. Resilient and adaptable.
3. Creative and reflective practitioner.
4. Emotionally intelligent and empathetic.
5. Strong commitment to inclusion and equality.
6. Alignment with the values and vision of Big Life Group and Unity Community Primary School.



# THE BIG LiFE GROUP

We fight for equity –  
in health, in wealth and in life.