

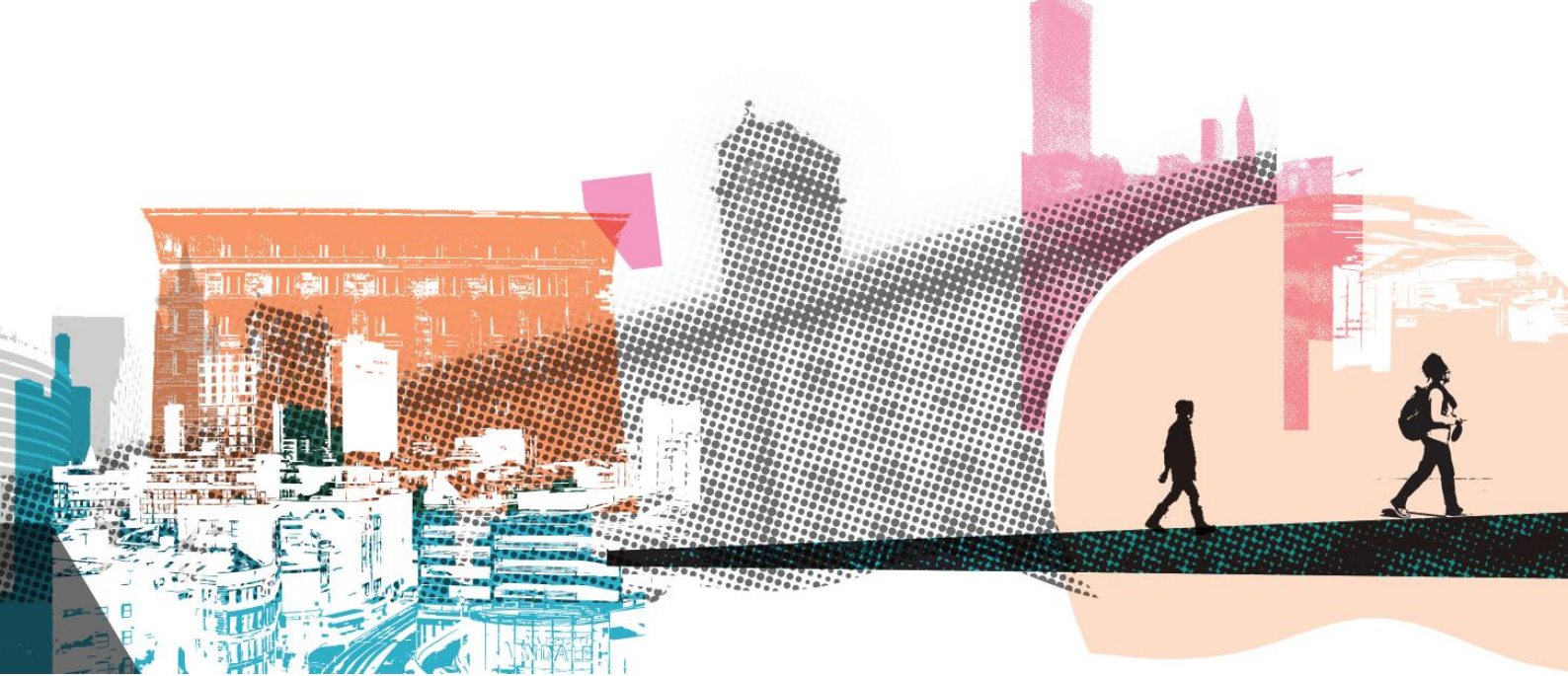
Recruitment pack

# THE BIG LiFE GROUP



## **SEND Teacher** **(Longsight Community Primary School)**

This job changes lives



## **About The Big Life Group**

The Big Life Group's mission is to fight for equity, in health, in wealth and in life. We are a social business delivering a range of services across the North of England, covering everything from mental and physical health, addiction and criminal justice, to housing, education, family support and much more. What links them together is the way we work – The Big Life Way.

We always stand shoulder-to-shoulder with people, working with them on the things that matter most to them. Everything we do is designed and informed by the needs, priorities and strengths of people and communities.

## **About Longsight Community Primary School**

Longsight Community Primary is a one-form entry primary school serving a richly diverse community in Longsight. It's part of the multi-academy trust Big Life Schools, which shares the vision and values of The Big Life Group. Longsight CP is a UNICEF Rights Respecting Gold school and we pride ourselves on our inclusive, nurturing ethos with a strong focus on the wellbeing of staff and children (23% of our pupils are on the SEND register and 6.8% have an EHCP).

Our specialist SEND provision (The Treehouse) was established in January 2025 in response to the very high level of complex needs within the school. These include children with significant communication and interaction difficulties, displaying high levels of sensory-seeking behaviour, and requiring sustained 1:1 support for basic self-care needs. All pupils accessing the provision have an EHCP, and most meet the threshold for a specialist school placement. Our school has developed this provision to ensure these pupils receive a safe, structured, and developmentally appropriate education.

## Our values

- **Courage:** We stand up for ourselves, and the people and communities we work alongside, even when that makes us unpopular, or challenges accepted wisdom.
- **Creativity:** We find innovative solutions that work, never accepting the easy option or the status quo.
- **Honesty:** We act with integrity, speaking the truth to ourselves and others.
- **Inspiration:** We are inspired by the people and communities we work with and share what we learn from them to inspire others.
- **Thoughtful:** We act with care and compassion and work to understand people's experiences. We take time to listen, reflect and continually learn.
- **Valuing difference:** We recognise and celebrate the unique qualities, gifts, insights and perspectives that different people offer.



# Working at Big Life

At Big Life, work is more than a job – it's about standing shoulder-to-shoulder with people and communities, making a difference every day. We fight for equity in health, in wealth and in life, and that commitment starts with how our staff.

## Be yourself

---

We want you to feel safe, respected and able to bring your whole self to work. Difference is celebrated here, and our staff networks - from menopause to neurodiversity, LGBTQI+ and more - create space to connect and support each other.

## Benefits that matter

---

We offer more than a payslip - you'll find wellbeing support through LifeWorks, Simply Health and mindfulness sessions, 25-30 days' annual leave plus your birthday off, flexible working, and regular learning opportunities. Everyday perks include Blue Light Card discounts, savings schemes, cycle-to-work, free eye tests and more - little extras to make life easier inside and outside of work.

## Recognised as outstanding

---

We're proud to be ranked by Best Companies as one of the UK's outstanding places to work, with a two-star accreditation in 2024.

## A culture of trust and flexibility

---

Our people describe our culture as relaxed and supportive. You'll be trusted to plan your own day, take breaks when you need, and work in a way that fits with your life as well as your role.

**If you're looking for more than a job - if you want to be part of a team that's bold, creative and relentlessly committed to equity – then Big Life could be the place for you.**

# Job Description: SEND Teacher

## The basics

---

### Salary

Teachers' pay scale M1 – U1: £31,650 - £45,646 plus SEND allowance (£2,787)

### Hours

Full-time school hours on a permanent basis. We would consider someone who wanted to work four days a week for work-life balance.

### Annual leave

School holidays

### Base

Longsight Community Primary School

### Closing date for applications

Monday, 11 May (midday)

### Interviews

Wednesday, 20 May

## Classroom responsibilities

---

- Teach children in the primary age range, catering for and having particular regard to the ability and the aptitude of children within the class, including the planning, preparation of lessons according to the educational needs of the children.
- Have a clear understanding of children's small steps of progress and next steps.
- Carry out such particular professional duties from the School Teachers' Pay and Conditions document as the headteacher may reasonably direct, which include:
  - Assessment of children
  - Recording and reporting assessments
  - Where appropriate, contributing to the professional development of other staff
  - Activities in the review and development of the curriculum or organisation and pastoral functions of the school
  - Participating in training and professional development

- Support the school's ethos, aims and curriculum policies in order to promote the welfare, progress and continued development of the school and its children, including promoting and supporting children to develop their self-care skills.
- Organise and monitor the work of pupils fulfilling the requirements of the school's curriculum and school policies.
- Share corporate responsibility for the wellbeing, safety and discipline of all pupils by implementing agreed school policies.
- Liaise confidently with the SENCO or outside agencies as and when necessary.
- Develop a suitable learning environment that will encourage and facilitate children's development.
- Supervise the work of teaching assistants, students, volunteers and parent helpers.
- Liaise with parents, providing opportunities for them to discuss and consult about their child's learning and progress.
- Ensure high standards of attendance and punctuality from pupils, in accordance with agreed school policy and practice.
- Liaise with outside agencies which may include, other schools, pre-school groups, professional bodies, MAT, training institutions etc (in connection with your curriculum responsibility).

## **School responsibilities**

---

- Contribute to displays of work in other parts of the school.
- Take part in directed hours activities – staff meetings, working parties and INSET.
- To lead a curriculum area, including:
  - Reporting to the Senior Leadership Team or Governing Body as and when required.
  - Collecting, evaluating and monitoring children's work and curriculum delivery.
  - Revising policies.
- Attend whole school events as required.
- Lead a school-wide initiative as required.
- Participate in Performance Management objective setting and review meetings as required.

## **Work-related expectations**

---

- Work within Big Life's mission, values and ethos.
- Contribute to the development of Big Life Schools.

- Work in accordance with all Big Life policies, particularly safeguarding, health and safety and information governance.
- Commit to personal development and ongoing professional learning.
- Work in line with all relevant legislation and professional standards.
- Participate in supervision, appraisal and performance management processes.
- Undertake any other duties appropriate to the role.

**The post is subject to an Enhanced DBS with a check of adults barred list and is exempt from the Rehabilitation of Offenders Act 1974**

# Person Specification: SEND Teacher

The successful candidate will be able to demonstrate that they meet the following points, either in their application, at an interview or through taking part in a test.

## Experience

---

- Qualified teacher status.
- Recent experience teaching across the primary age range in the UK, including pupils with SEND.
- Attended recent, relevant courses or pursued other forms of professional development

## Skills

---

- An excellent classroom practitioner
- Communicate effectively in a variety of ways
- Self-evaluate and evaluate progress of others
- Liaise with relevant staff with regards to class and whole school issues
- Lead, support and motivate staff and children to raise attainment
- An effective team player
- Manage time effectively
- Promote effective links and build quality relationships with parents and carers, relevant agencies and the local community for the benefit of children and the whole school

## Knowledge

---

- Knowledge and understanding of current developments in SEND pedagogy
- Understanding of the needs of groups of children and families who may experience barriers to learning to ensure that inclusion is at the heart of educational delivery
- A working understanding of assessment procedures and practice specific to SEND children
- Full understanding of and willingness to implement safeguarding procedures

## **Commitment**

---

- The aims, policies and ethos of Longsight Community Primary School
- Working with parents and carers, governors and the local community
- Good attendance
- Undertake further professional development
- Consent to undergo appropriate vetting procedures and a satisfactory Disclosure and Barring Service Enhanced check

## **Personal**

---

- Excellent role model
- Patient, positive and enthusiastic
- Well-organised and adaptable
- Emotionally intelligent and empathetic
- Creative



# THE BIG LIFE GROUP

We fight for equity –  
in health, in wealth and in life.