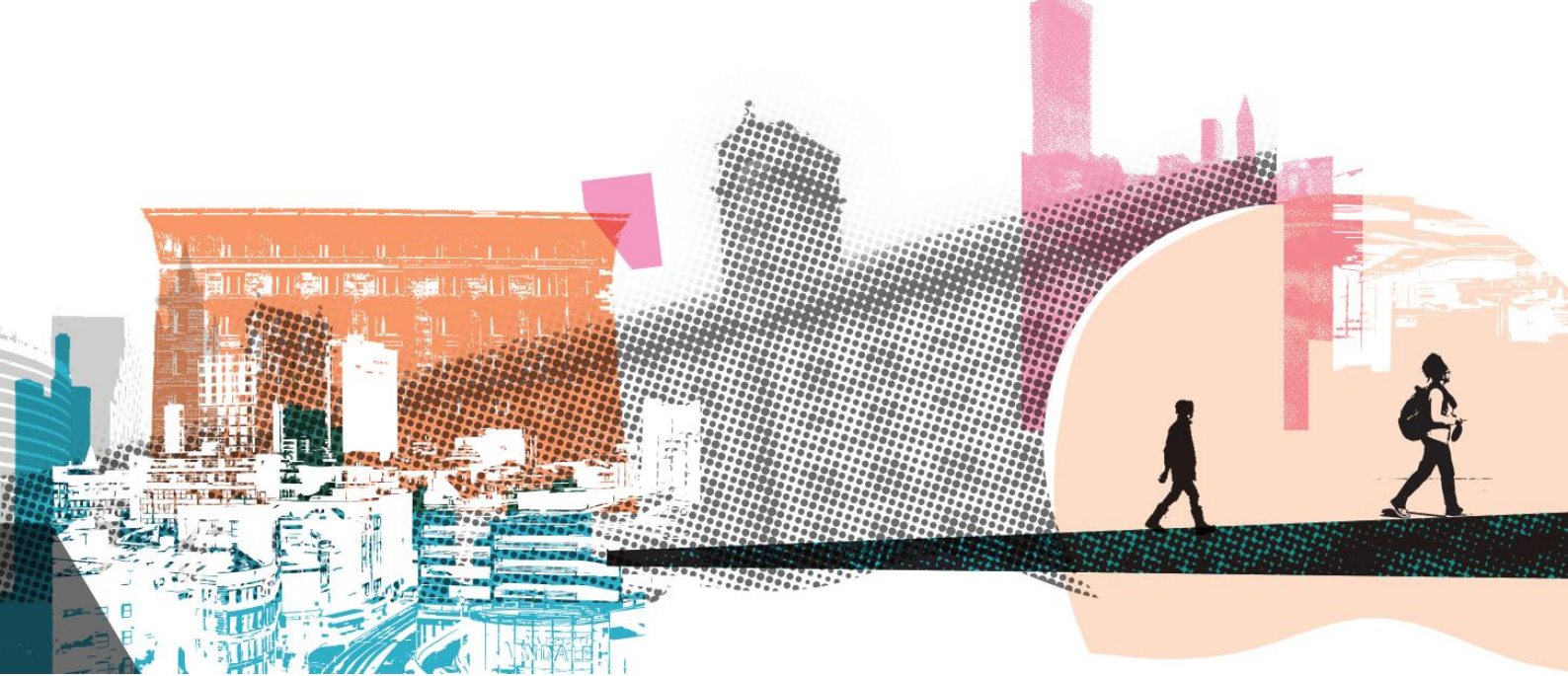


# THE BIG LiFE GROUP



**Class Teacher**  
**(Unity Community Primary School)**

This job changes lives



## About The Big Life Group

The Big Life Group's mission is to fight for equity, in health, in wealth and in life. We are a social business delivering a range of services across the North of England, covering everything from mental and physical health, addiction and criminal justice, to housing, education, family support and much more. What links them together is the way we work – The Big Life Way.

We always stand shoulder-to-shoulder with people, working with them on the things that matter most to them. Everything we do is designed and informed by the needs, priorities and strengths of people and communities.

## Our values

- **Courage:** We stand up for ourselves, and the people and communities we work alongside, even when that makes us unpopular, or challenges accepted wisdom.
- **Creativity:** We find innovative solutions that work, never accepting the easy option or the status quo.
- **Honesty:** We act with integrity, speaking the truth to ourselves and others.
- **Inspiration:** We are inspired by the people and communities we work with and share what we learn from them to inspire others.
- **Thoughtful:** We act with care and compassion and work to understand people's experiences. We take time to listen, reflect and continually learn.
- **Valuing difference:** We recognise and celebrate the unique qualities, gifts, insights and perspectives that different people offer.

# Working at Big Life

At Big Life, work is more than a job – it's about standing shoulder-to-shoulder with people and communities, making a difference every day. We fight for equity in health, in wealth and in life, and that commitment starts with how our staff.

## Be yourself

---

We want you to feel safe, respected and able to bring your whole self to work. Difference is celebrated here, and our staff networks - from menopause to neurodiversity, LGBTQI+ and more - create space to connect and support each other.

## Benefits that matter

---

We offer more than a payslip - you'll find wellbeing support through LifeWorks, Simply Health and mindfulness sessions, 25-30 days' annual leave plus your birthday off, flexible working, and regular learning opportunities. Everyday perks include Blue Light Card discounts, savings schemes, cycle-to-work, free eye tests and more - little extras to make life easier inside and outside of work.

## Recognised as outstanding

---

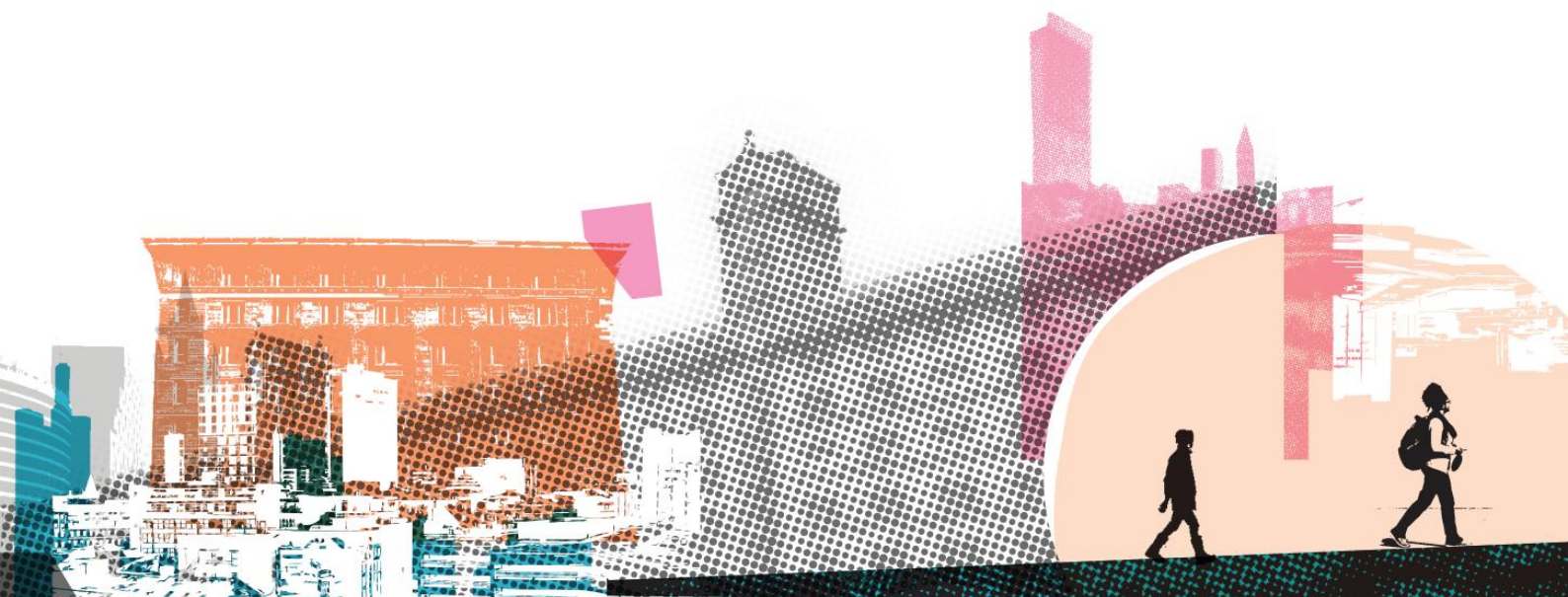
We're proud to be ranked by Best Companies as one of the UK's outstanding places to work, with a two-star accreditation in 2024.

## A culture of trust and flexibility

---

Our people describe our culture as relaxed and supportive. You'll be trusted to plan your own day, take breaks when you need, and work in a way that fits with your life as well as your role.

**If you're looking for more than a job - if you want to be part of a team that's bold, creative and relentlessly committed to equity – then Big Life could be the place for you.**



# Job Description: Class Teacher

## The basics

---

### Salary

Teachers' pay scale M1 – U1: £31,650 - £45,646

### Hours

Full-time school hours, term-time only (39 weeks per year)

### Annual leave

Term-time only

### Base

Unity Community Primary School

### Line manager

Assistant Headteacher / Phase Leader

**Closing date for applications:** Monday 27 April (9:00 am)

**Interviews:** Friday 1 May

## What you'll be doing

---

As a Reception class teacher at Unity Community Primary School, you will be responsible for providing high-quality teaching and learning within the Early Years Foundation Stage (EYFS). You will help to maintain a nurturing, play-based learning environment that supports children to develop and achieve their full potential.

As an Early Years practitioner, you will act as a positive role model, fostering strong relationships with young children and promoting curiosity and independence. Your role will be to encourage pupil's positive behaviour, wellbeing and readiness for learning through consistent routines and high-quality interactions. You will maintain high expectations for all pupils, ensuring development through careful observation and appropriate adaption of learning provisions.

This is an exciting opportunity to teach children in the Primary age range, which will include the planning and preparation of daily lessons and regular collaboration with the school's Senior Leadership Team, to ensure all children are supported to make good progress and development.

## **Main duties**

---

### **Classroom Responsibilities:**

1. Teach children in the Primary age range, including preparing lessons and marking work.
2. Plan and adapt provision for children with additional needs, in collaboration with the Senior Leadership Team.
3. Develop positive relationships with children, colleagues and parents and promote high standards of behaviour.
4. Carry out duties from the School Teachers' Pay and Conditions Document, including; recording and reporting assessments, reviewing the school's curriculum and pastoral functions, participating in training and professional development.
5. Support the school's ethos and policies in order to promote the progress and continued development of the school.
6. Organise and monitor the work of pupils, fulfilling the requirements of the Early Years Framework.
7. Share corporate responsibility for the wellbeing, safety and discipline of all pupils by implementing agreed school policies.
8. Liaise with the SENCO or outside agencies as and when necessary.
9. Create a stimulating learning environment that will encourage children's development.
10. Ensure high standards of attendance and punctuality, in accordance with school policies.
11. Supervise the work of teaching assistants, students, volunteers and parent helpers.
12. Liaise with parents and consult with them about their child's learning and progress.
13. Liaise with outside agencies which may include, other schools, pre-school groups, professional bodies, MAT, training institutions etc.

### **School Responsibilities:**

1. Contribute to displays of work in other parts of the school.
2. Take part in directed hours activities – staff meetings, working parties and INSET.
3. Lead on a curriculum area which may include, reporting to Senior Leadership Team, evaluating curriculum delivery and monitoring children's work.
4. Attend school events - Christmas and summer fairs, school concerts.
5. Lead a school-wide initiative as required.
6. Participate in Performance Management objective setting and review meetings.

## **Work-related expectations**

---

1. Work within Big Life Group's mission, values and ethos.
2. Contribute to the development of Big Life Group and Big Life Schools Trust.
3. Work in accordance with all Big Life Group policies and procedures, particularly safeguarding, health and safety and information governance.
4. Commit to personal development and attend required training.
5. Work in line with all relevant legislation and statutory frameworks.
6. Participate in regular supervision and appraisal.
7. Undertake any other duties appropriate to the role.

## **About Unity Community Primary School**

---

Unity Community Primary is a two-form entry primary school serving a richly diverse community in Cheetham, North Manchester. Unity is part of the multi-academy trust Big Life Schools, which shares the vision and values of the Big Life group.

We have nearly 400 pupils aged 2-11, coming from many different countries and speaking 38 different languages. Our pupils are happy children who love school, and we want to encourage them to have the best possible start in life. We work hard to be a truly inclusive community. Diversity, respect and tolerance are at the core of our school identity, and we are proud to have the Rights Respecting Gold Award and the Belonging Matters Charter Mark.

As a school we use trauma-informed approaches to support our children's emotional health and wellbeing. We also put a great emphasis on developing positive relationships between every member of our school community.

Candidates are highly encouraged to visit the school and discuss the position with Head of Early Years. Please ring the school office on 0161 871 2614 or visit [www.unitycommunityprimary.com](http://www.unitycommunityprimary.com) for more information about our school.

**The post is subject to an Enhanced DBS with a check of adults barred list and is exempt from the Rehabilitation of Offenders Act 1974**

# Person Specification: Class Teacher

The successful candidate will be able to demonstrate that they meet the following points, either in their application, at an interview or through taking part in a test.

## Experience

---

1. Recent experience of teaching children in the Early Years in the UK
2. Experience building relationships with children, parents/carers and the local community.

## Skills

---

1. Be an excellent Early Years practitioner.
2. Ability to communicate effectively in a variety of ways.
3. Ability to self-evaluate and evaluate the progress of others.
4. Ability to liaise with staff with regards to classroom and school issues.
5. Lead, support and motivate staff and children to raise attainment.
6. Effective time management skills.

## Knowledge

---

1. Knowledge and understanding of current developments underpinning school organisations, the Early Years framework and SEND.
2. Understanding of the needs of groups of children and families who face barriers to learning.
3. Have a clear working understanding of assessment procedures and practice.
4. Full understanding of and willingness to implement safeguarding procedures.

## Education

---

1. A recognised teaching qualification.
2. Attended relevant courses or other forms of professional development.

## Personal

---

1. A patient, positive and an enthusiastic approach.
2. Emotionally intelligent and empathetic, with a strong commitment to child welfare.
3. Alignment with the values and vision of Big Life Group and Unity Community Primary School.
4. Commitment to equality, diversity and inclusion.
5. Dedication to continuous professional development and service improvement.
6. Consent to undergo vetting procedures and an enhanced DBS check.



# THE BIG LIFE GROUP

We fight for equity –  
in health, in wealth and in life.